




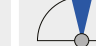





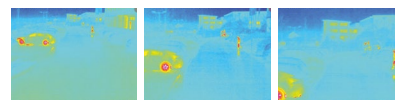


	B016 (L10) Fisheye Lens	B036 (L20) Ultra Wide Lens	B041 (L22) Super Wide Lens	B061 (L32) Wide Lens	B079 (L43) Standard Lens	B119 (L65) Tele Lens	B237 (L135) Distant Tele Lens	B500 (L270) Super Tele Lens	B045-100-CS CS Vario Lens
Image Angle (horizontal)									
Focal Length	1.6 mm	3.6 mm	4.1 mm	6.1 mm	7.9 mm	11.9 mm	23.7 mm	50 mm	4.5-10 mm
35 mm Equivalent	10 mm	20 mm	22 mm	32 mm	43 mm	65 mm	135 mm	270 mm	24-54 mm
Aperture f/	2.0	1.8	1.8	1.8	1.8	1.8	1.8	2.5	1.6-2.3
Image Angle (4:3 format, horiz. x vertical)	180° x 180°	103° x 77°	90° x 67°	60° x 45°	45° x 34°	31° x 23°	15° x 11°	8° x 6°	39°-89° x 29°-65°

Indoor Cameras	B016 (Day)	B016 (Night)	B036 (Day)	B036 (Night)	B041 (Day)	B041 (Night)	B061 (Day)	B061 (Night)	B079 (Day)	B079 (Night)	B119 (Day)	B119 (Night)	B237 (Day)	B237 (Night)	B500 (Day)	B500 (Night)	Vario (Day)	Vario (Night)
i25	●	●	●	●	-	-	-	-	-	-	-	-	-	-	-	-	-	-
c25	●	●	●	●	-	-	-	-	-	-	-	-	-	-	-	-	-	-
p25	●	●	●	●	●	●	●	●	●	●	●	●	●	●	-	-	-	-

Outdoor Cameras	B016 (Day)	B016 (Night)	B036 (Day)	B036 (Night)	B041 (Day)	B041 (Night)	B061 (Day)	B061 (Night)	B079 (Day)	B079 (Night)	B119 (Day)	B119 (Night)	B237 (Day)	B237 (Night)	B500 (Day)	B500 (Night)	Vario (Day)	Vario (Night)
Q25	●	●	-	-	●	●	-	-	-	-	-	-	-	-	-	-	-	-
M25	●	●	●	●	●	●	●	●	●	●	●	●	●	●	●	●	●	●
D25	-	-	●	●	●	●	●	●	●	●	●	●	●	●	-	-	-	-
S15M	●	●	-	-	-	-	-	-	-	-	-	-	-	-	-	-	-	-
M15	●	●	●	●	●	●	●	●	●	●	●	●	●	●	●	●	●	●
S15	●	●	●	●	●	●	●	●	●	●	●	●	●	●	●	●	●	●
D15	-	-	●	●	●	●	●	●	●	●	●	●	●	●	-	-	-	-

Building Automation	B016 (Day)	B016 (Night)	B036 (Day)	B036 (Night)	B041 (Day)	B041 (Night)	B061 (Day)	B061 (Night)	B079 (Day)	B079 (Night)	B119 (Day)	B119 (Night)	B237 (Day)	B237 (Night)	B500 (Day)	B500 (Night)	Vario (Day)	Vario (Night)
T25	●	●	-	-	-	-	-	-	-	-	-	-	-	-	-	-	-	-



Thermal Cameras					L43	L65	L135		
Image Angle (horizontal)									
M15 Thermal/-TR	-	-	-	-	●	●	●	-	-
S15 Thermal/-TR	-	-	-	-	●	●	●	-	-
PTMount-Thermal /-TR	-	-	-	-	●	●	●	-	-

PLEASE NOTE – Special Export Regulations For Thermographic Cameras

Cameras with thermographic image sensors ('thermographic cameras') are subject to special U.S. and ITAR (International Traffic in Arms Regulation) export regulations:

- According to the currently valid export regulations of the U.S. and ITAR, cameras with thermographic image sensors or their component parts cannot be exported to countries that have been embargoed by the U.S./ITAR. This currently applies to Syria, Iran, Cuba, North Korea and Sudan, in particular. The equivalent delivery ban also applies to all individuals and institutions included in 'The Denied Persons List' (see www.bis.doc.gov, under Policy Guidance > Lists of Parties of Concern).
- These cameras and their installed thermographic image sensors are not to be used for the design, development, or production of nuclear, biological or chemical weapons or installed in these systems.